

# PONYTA

farm mammals plush  
SEWING PATTERN HACK



a free embroidery design by



# PONYTA PLUSH

## embroidery design

---

### OVERVIEW

---

These embroidery files contain the eye, muzzle, Galar mane, and Galar horn embroidery designs for the **PONYTA PLUSH SEWING PATTERN HACK**. They'll create new pieces that are added onto the **FARM MAMMAL PLUSH** body.



#### EYES

Stitches out the eyes for the **HEAD FRONT (F1)**.  
**FITS:** hoops 4" x 4" and above



#### MUZZLE

Stitches out the nostrils and mouth for the **MUZZLE (F13)**.  
**FITS:** hoops 4" x 4" and above



#### MANE

Stitches the accent sections for the **MANE (PG14A)** AND **TAIL (PG11A)**.  
**SIZE:** includes adjusted designs for 4x4, 5x7, 6x10, and 8x14 hoops.



#### HORN

Appliques the stripe for the **HORN (PG17)**.  
**FITS:** hoops 4" x 4" and above

sew desu ne?

| [WWW.CHOLYKNIGHT.COM](http://WWW.CHOLYKNIGHT.COM) |

// ©2026 Choly Knight // Items sewn using this design may be sold. Credit to "Choly Knight" or "Sew Desu Ne?" is appreciated.  
You may not reproduce, share, freely distribute, or sell this design as your own in digital or printed form.

## MATERIALS & TOOLS:

### □ KANTO PONYTA:

- Two 5" x 8" pieces of cream fabric for **HEAD FRONT (F1)**
- 7" x 6" of cream fabric for **MUZZLE (F13)**
- black thread for eyes, nostrils, and mouth
- brown thread for eye highlights
- white thread for eye shines

### □ GALAR PONYTA:

- Two 5" x 8" pieces of white fabric for **HEAD FRONT (F1)**
- 7" x 6" of white fabric for **MUZZLE (F13)**
- 7" x 6" of black fabric for **HORN (PG17)**
- Two 9" x 10" pieces of lilac fabric for **TAIL (PG11A)**
- Two 10" x 15" pieces of lilac fabric for **MANE (PG14A)**
- dark purple thread for eyes
- black thread for nostrils and mouth
- white thread for eye shines
- aqua thread for mane and tail accents

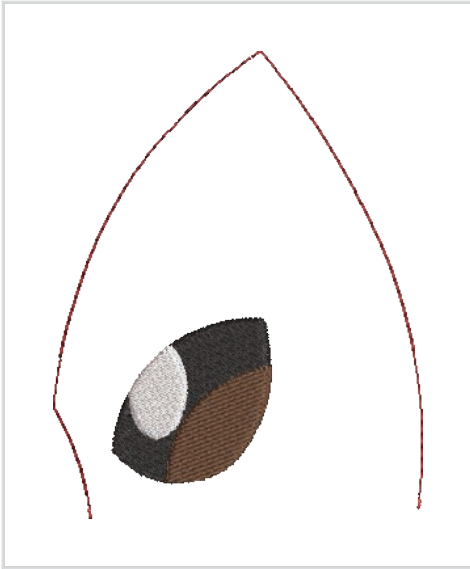
- medium to heavy-weight cut-away stabilizer
- water soluble top stabilizer (if using minky)
- basic embroidery tools: (embroidery machine, embroidery scissors, spray adhesive, bobbin thread, sewing needles, embroidery hoops, masking tape)



sew desu ne?

| [WWW.CHOLYKNIGHT.COM](http://WWW.CHOLYKNIGHT.COM) |

// ©2026 Choly Knight // Items sewn using this design may be sold. Credit to "Choly Knight" or "Sew Desu Ne?" is appreciated.  
You may not reproduce, share, freely distribute, or sell this design as your own in digital or printed form.



## KANTO EYE:

### SIZE:

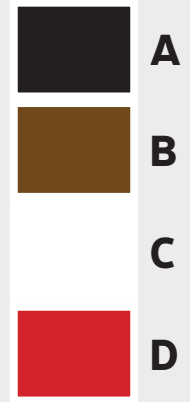
75mm x 95mm (3 in x 3.7 in)

### Colors needed: 3

- eye
- eye highlight
- eye shine

### Color changes: 4

**FABRIC:** Two 5" x 8" pieces of cream fabric for **HEAD FRONT (F1)**



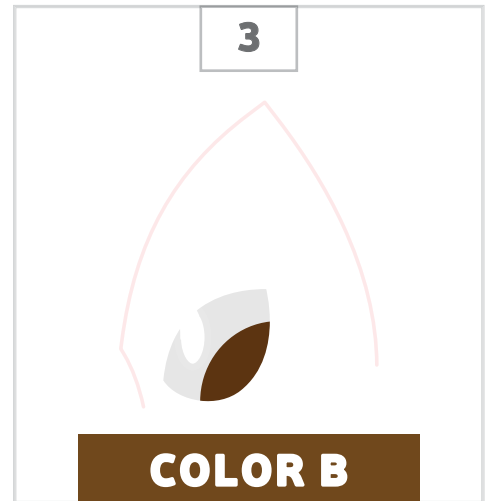
### HOOP YOUR FABRIC

- Hoop your fabric and cut-away stabilizer into an embroidery hoop 4" x 4" or larger.
- Hoop water-soluble stabilizer with the fabric, or tape it on afterwards.



### EYES

- Black is the character accurate color to use here.

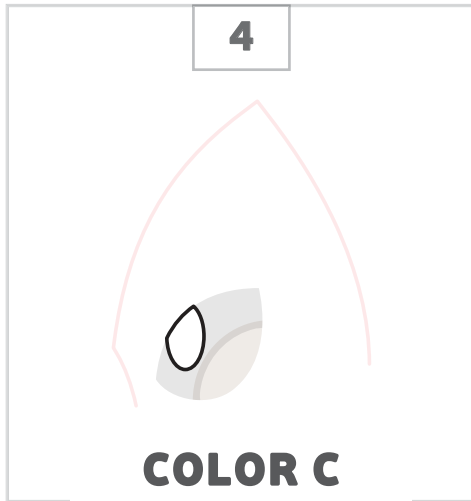


### EYE HIGHLIGHT

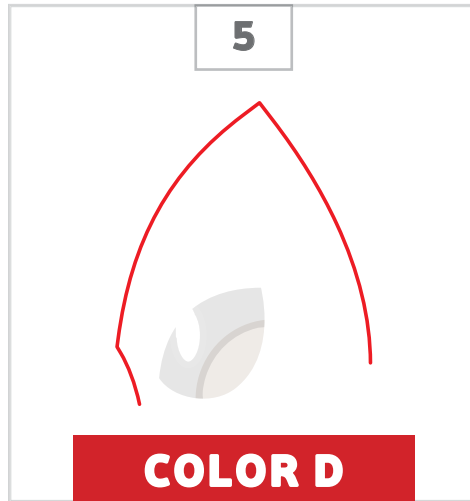
- Brown is the character accurate color to use here.

sew desu ne?

| [WWW.CHOLYKNIGHT.COM](http://WWW.CHOLYKNIGHT.COM) |

**EYE SHINE**

- White is the character accurate color to use here.

**ALIGNMENT GUIDE**

- Any color can be used for this.
- This stitches out a guideline for cutting the pattern piece.

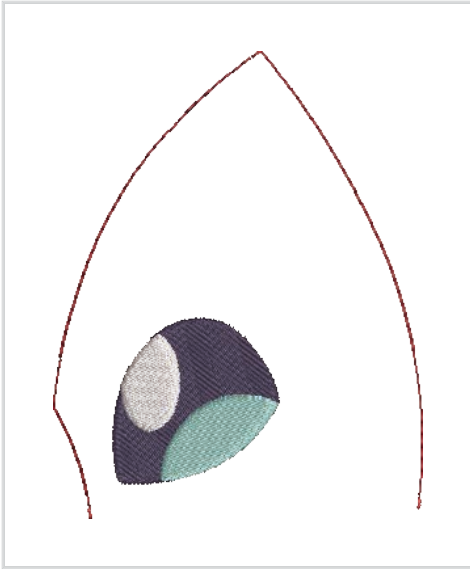
**CUT THE PATTERN**

- When finished embroidering, remove the hoop from the machine and trim the threads. Rip off the water-soluble stabilizer and cut away the backing stabilizer. Align the **HEAD FRONT (F1)** pattern onto the embroidery, matching up the paper with the alignment stitching.
- Pin the paper pattern in place (or trace the outline). Cut around the pattern. Use the fabric as usual with the rest of the project instructions.

**sew desu ne?**

| [WWW.CHOLYKNIGHT.COM](http://WWW.CHOLYKNIGHT.COM) |

/// ©2026 Choly Knight /// Items sewn using this design may be sold. Credit to "Choly Knight" or "Sew Desu Ne?" is appreciated. You may not reproduce, share, freely distribute, or sell this design as your own in digital or printed form.



## GALAR EYE:

### SIZE:

75mm x 95mm (3 in x 3.7 in)

### Colors needed: 3

- eye
- eye highlight
- eye shine

### Color changes: 4

**FABRIC:** Two 5" x 8" pieces of white fabric for **HEAD FRONT (F1)**



### HOOP YOUR FABRIC

- Hoop your fabric and cut-away stabilizer into an embroidery hoop 4" x 4" or larger.
- Hoop water-soluble stabilizer with the fabric, or tape it on afterwards.



### EYES

- Dark purple is the character accurate color to use here.



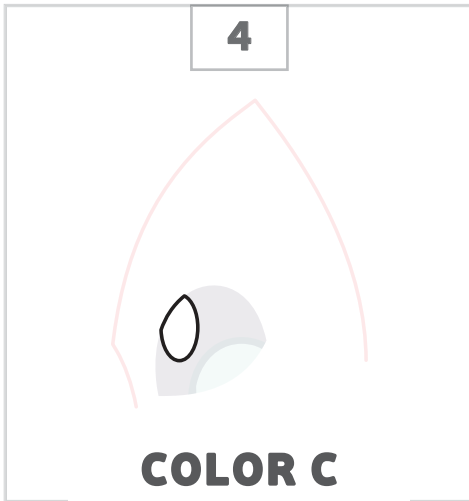
### EYE HIGHLIGHT

- Aqua is the character accurate color to use here.

**sew desu ne?**

| [WWW.CHOLYKNIGHT.COM](http://WWW.CHOLYKNIGHT.COM) |

// ©2026 Choly Knight // Items sewn using this design may be sold. Credit to "Choly Knight" or "Sew Desu Ne?" is appreciated. You may not reproduce, share, freely distribute, or sell this design as your own in digital or printed form.

**EYE SHINE**

- White is the character accurate color to use here.

**ALIGNMENT GUIDE**

- Any color can be used for this.
- This stitches out a guideline for cutting the pattern piece.

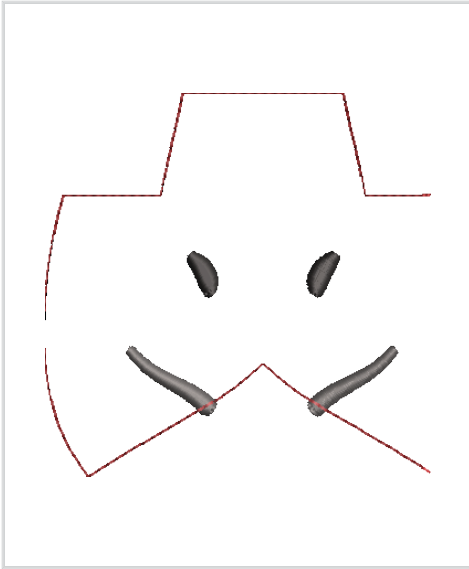
**CUT THE PATTERN**

- When finished embroidering, remove the hoop from the machine and trim the threads. Rip off the water-soluble stabilizer and cut away the backing stabilizer.
- Align the **HEAD FRONT (F1)** pattern onto the embroidery, matching up the paper with the alignment stitching.
- Pin the paper pattern in place (or trace the outline). Cut around the pattern. Use the fabric as usual with the rest of the project instructions.

**sew desu ne?**

| [WWW.CHOLYKNIGHT.COM](http://WWW.CHOLYKNIGHT.COM) |





## MUZZLE:

### SIZE:

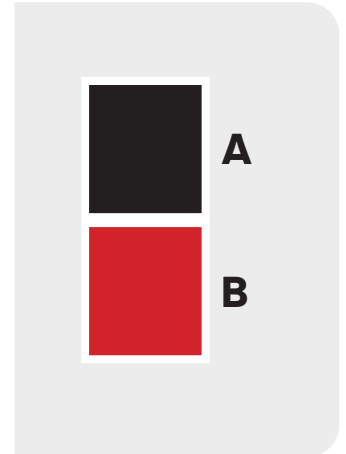
92mm x 92mm (3.6 in x 3.6 in)

### Colors needed: 1

- nostrils, mouth

### Color changes: 2

**FABRIC:** 7" x 6" of cream or white fabric for **MUZZLE (F13)**



### HOOP YOUR FABRIC

- Hoop your fabric and cut-away stabilizer into an embroidery hoop 4" x 4" or larger.
- Hoop water-soluble stabilizer with the fabric, or tape it on afterwards.



### NOSTRILS, MOUTH

- Black, gray, or brown would be good colors to use here.



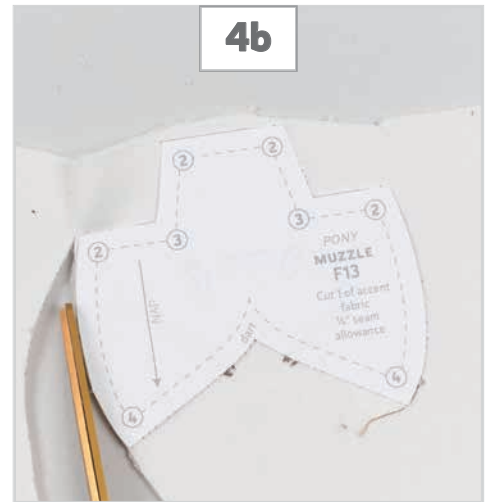
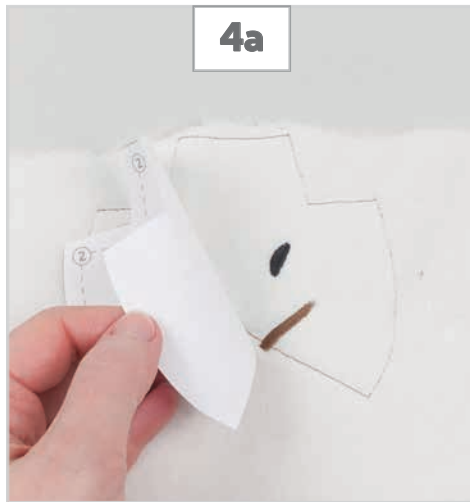
### ALIGNMENT GUIDE

- Any color can be used for this.
- This stitches out a guideline for cutting the pattern piece.

sew desu ne?

| [WWW.CHOLYKNIGHT.COM](http://WWW.CHOLYKNIGHT.COM) |





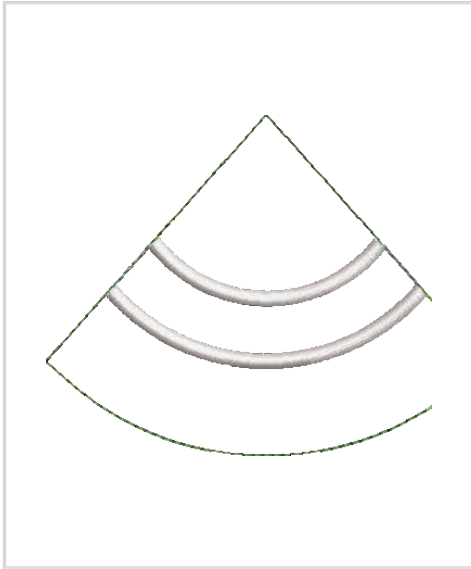
## CUT THE PATTERN

- a.** When finished embroidering, remove the hoop from the machine and trim the threads. Rip off the water-soluble stabilizer and cut away the backing stabilizer.
- b.** Align the **MUZZLE (F13)** pattern onto the embroidery, matching up the paper with the alignment stitching.
- c.** Pin the paper pattern in place (or trace the outline). Cut around the pattern.  
Use the fabric as usual with the rest of the project instructions.

sew desu ne?

| [WWW.CHOLYKNIGHT.COM](http://WWW.CHOLYKNIGHT.COM) |

// ©2026 Choly Knight // Items sewn using this design may be sold. Credit to "Choly Knight" or "Sew Desu Ne?" is appreciated.  
You may not reproduce, share, freely distribute, or sell this design as your own in digital or printed form.



## GALAR HORN:

### SIZE:

75mm x 95mm (3 in x 3.7 in)

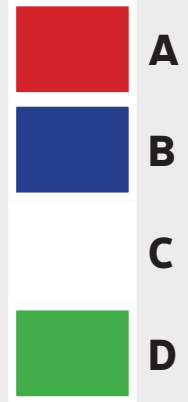
### Colors needed: 1

- stripe outline

### Color changes: 4

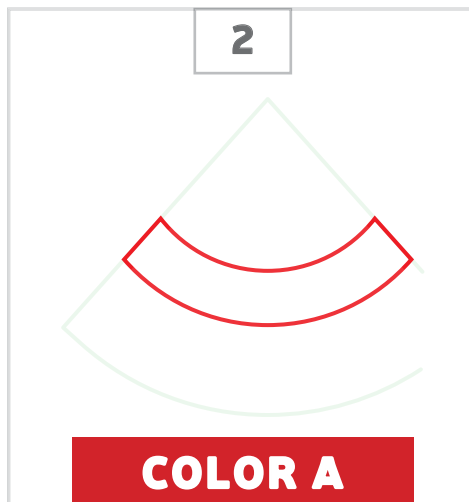
**FABRIC:** 7" x 6" of black fabric for **HORN** (PG17)

4" x 3" of white fabric for stripe applique



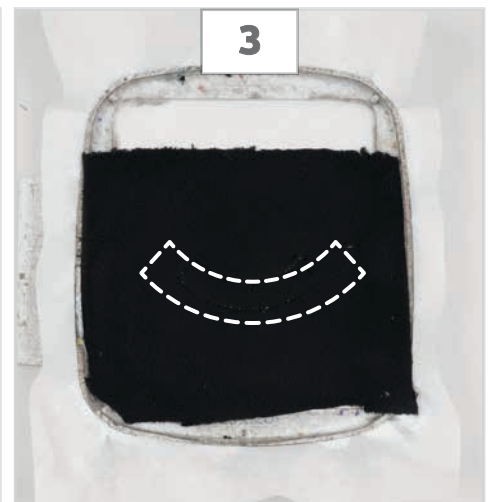
### HOOP YOUR FABRIC

- The sample is hooped with the floating method, so the fabric is adhered to the top of cut-away stabilizer. Water-soluble stabilizer is taped on top later.



### APPLIQUE PLACEMENT

- This creates a guideline for placing your **HORN STRIPE** fabric.



### REMOVE THE HOOP

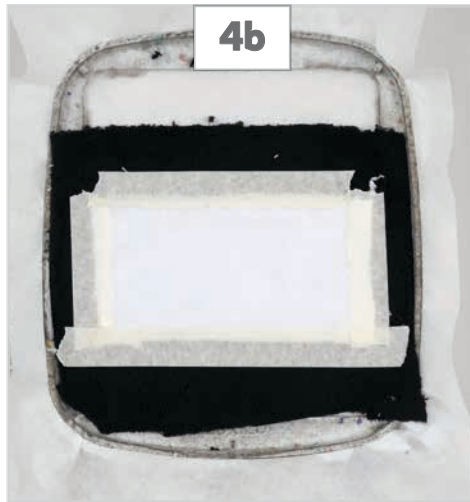
- Remove the hoop from your machine. Trim the threads.

sew desu ne?

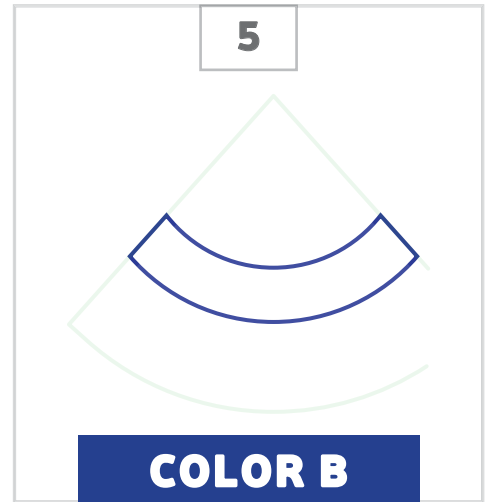
| [WWW.CHOLYKNIGHT.COM](http://WWW.CHOLYKNIGHT.COM) |



4a



4b



5

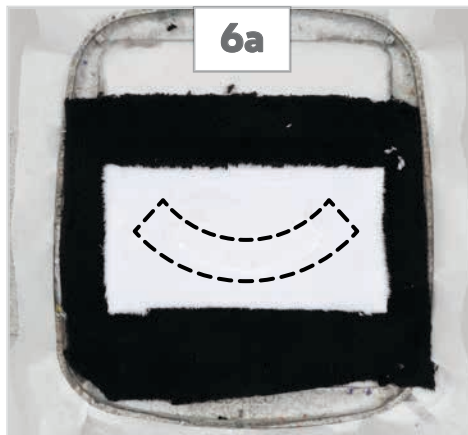
COLOR B

### PLACE THE APPLIQUE FABRIC

- Place the **HORN STRIPE** fabric over the stitched guideline.
- Tape the edges of the fabric in place to hold for the next stitching.  
Place the hoop back in the machine.

### APPLIQUE OUTLINE

- Use a thread color that matches your applique fabric for this step.
- This secures the edge of the **HORN STRIPE** fabric.



6a



6b

trim very close  
to stitching

6c

clean up with  
lint roller

### TRIM THE APPLIQUE FABRIC

- Remove the hoop from the machine. Trim the threads.
- Trim the **HORN STRIPE** fabric as close as you can around the stitching. Use curved embroidery scissors for the best result.
- Run a lint roller over the cut edges if using a fur fabric like minky. This will eliminate any stray fuzz. Tape water-soluble stabilizer over the whole embroidery area. Place the hoop back in the machine.

sew desu ne?

| WWW.CHOLYKNIGHT.COM |



### ADD THE TOP STABILIZER

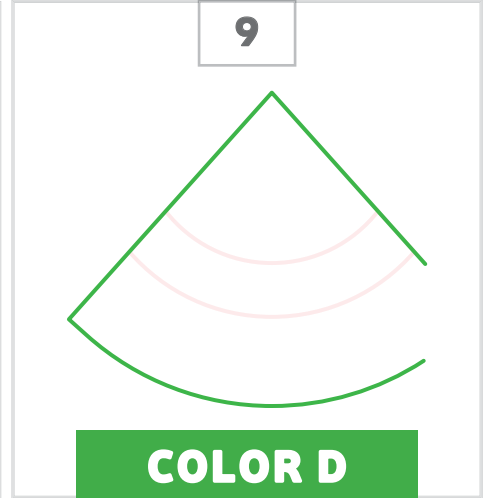
- a. Remove the hoop from your machine. Trim the threads.
- b. Add water soluble stabilizer over the top of the embroidery area.



### COLOR C

### APPLIQUE EDGE

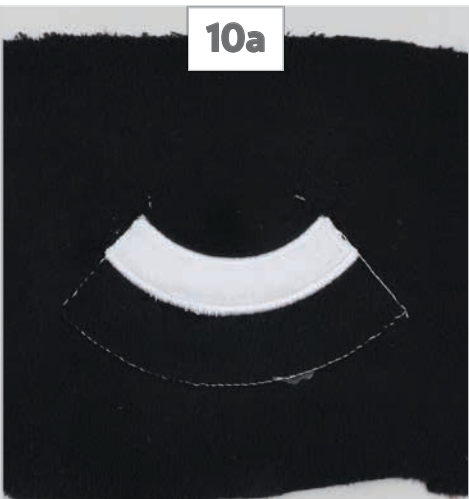
- Use a thread color that matches your applique fabric for the best result.
- This creates satin stitching that will cover the cut edge of your **HORN STRIPE** fabric.



### COLOR D

### ALIGNMENT GUIDE

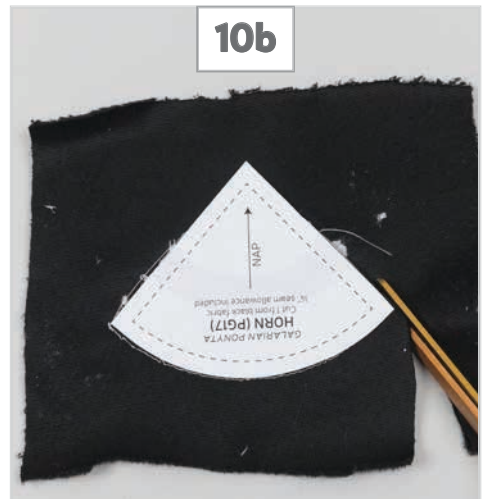
- Any color can be used for this.
- This stitches out a guideline for cutting the pattern piece.



10a



10a



10b

### CUT THE PATTERN

- a. When finished embroidering, remove the hoop from the machine and trim the threads. Rip off the water-soluble stabilizer and cut away the backing stabilizer.
- b. Align the **HORN (PG17)** pattern onto the embroidery, matching up the paper with the alignment stitching.
- c. Pin the paper pattern in place (or trace the outline). Cut around the pattern. Use the fabric as usual with the rest of the project instructions.

sew desu ne?

| WWW.CHOLYKNIGHT.COM |

## GALAR MANE & TAIL

Included here are the files for the **GALAR PONYTA MANE** (PF14a) and **TAIL** (PG11a). They are very large pieces, so many versions are included to accommodate the different embroidery hoop sizes.

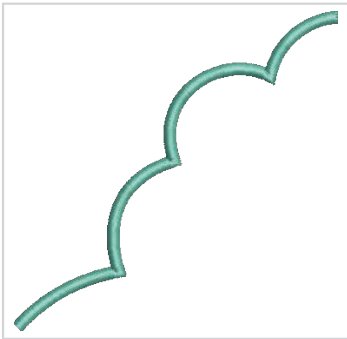
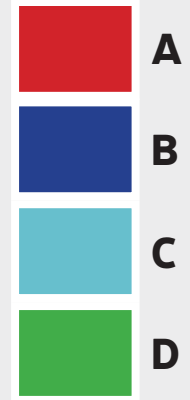
The largest sizes applique all of the accent parts (the **BOTTOM** and **TIPS**), while the smaller sizes just include the bottom. The tips are sewn later following the pattern hack instructions.

### COLORS:

*Colors needed:* 1

- accent outline

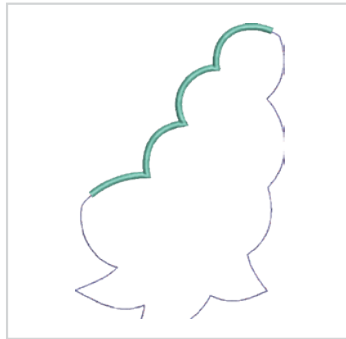
*Color changes:* 4



### MANE 4x4

**SIZE:** 99mm x 97mm (3.9 in x 3.8 in)

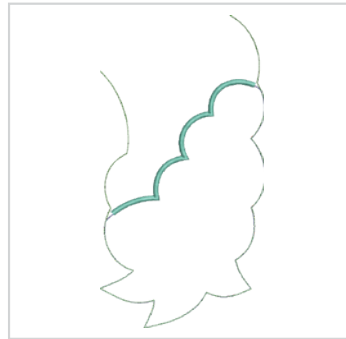
**FABRIC:** Two 10" x 15" pieces of lilac fabric for **MANE** (PG14a)  
Two 8" x 8" pieces of aqua fabric for bottom applique



### MANE 5x7

**SIZE:** 125mm x 177mm (4.9 in x 7 in)

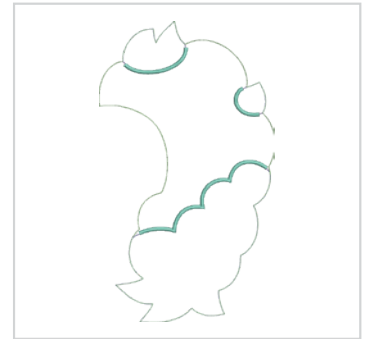
**FABRIC:** Two 10" x 15" pieces of lilac fabric for **MANE** (PG14a)  
Two 8" x 8" pieces of aqua fabric for bottom applique



### MANE 6x10

**SIZE:** 125mm x 239mm (4.9 in x 9.4 in)

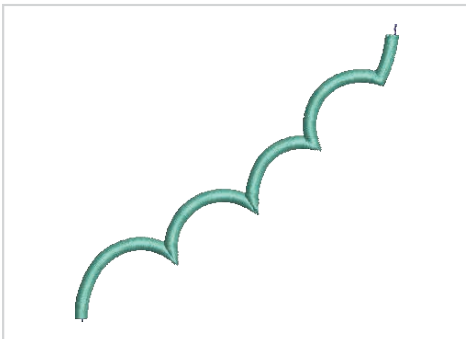
**FABRIC:** Two 10" x 15" pieces of lilac fabric for **MANE** (PG14a)  
Two 8" x 8" pieces of aqua fabric for bottom applique



### MANE 8x14

**SIZE:** 180mm x 308mm (7.1 in x 12.1 in)

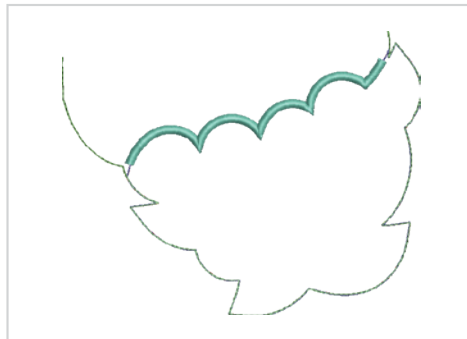
**FABRIC:** Two 10" x 15" pieces of lilac fabric for **MANE** (PG14a)  
Two 8" x 14" pieces of aqua fabric for accent applique



### TAIL 4x4

**SIZE:** 93mm x 86mm (3.7 in x 3.4 in)

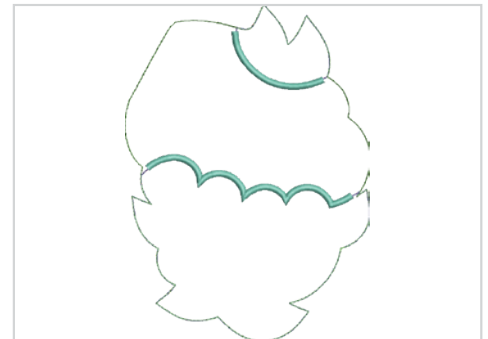
**FABRIC:** Two 9" x 10" pieces of lilac fabric for **TAIL** (PG11a)  
Two 7" x 6" pieces of aqua fabric for bottom applique



### TAIL 5x7

**SIZE:** 160mm x 126mm (6.3 in x 5 in)

**FABRIC:** Two 9" x 10" pieces of lilac fabric for **TAIL** (PG11a)  
Two 7" x 6" pieces of aqua fabric for bottom applique



### TAIL 6x10

**SIZE:** 145mm x 199mm (5.7 in x 7.8 in)

**FABRIC:** Two 9" x 10" pieces of lilac fabric for **TAIL** (PG11a)  
Two 7" x 9" pieces of aqua fabric for accent applique

sew desu ne?

| [WWW.CHOLYKNIGHT.COM](http://WWW.CHOLYKNIGHT.COM) |





### HOOP YOUR FABRIC

- The sample is hooped with the floating method, so the fabric is adhered to the top of cut-away stabilizer. Water-soluble stabilizer is taped on top later.



### APPLIQUE PLACEMENT

- This creates a guideline for placing your **ACCENT** fabric.



### REMOVE THE HOOP

- Remove the hoop from your machine. Trim the threads.



### PLACE THE APPLIQUE FABRIC

- Place the **ACCENT** fabric over the stitched guideline.
- Tape the edges of the fabric in place to hold for the next stitching. Place the hoop back in the machine.



### APPLIQUE OUTLINE

- Use a thread color that matches your applique fabric for this step.
- This secures the edge of the **ACCENT** fabric.

sew desu ne?

| [WWW.CHOLYKNIGHT.COM](http://WWW.CHOLYKNIGHT.COM) |

// ©2026 Choly Knight // Items sewn using this design may be sold. Credit to "Choly Knight" or "Sew Desu Ne?" is appreciated. You may not reproduce, share, freely distribute, or sell this design as your own in digital or printed form.



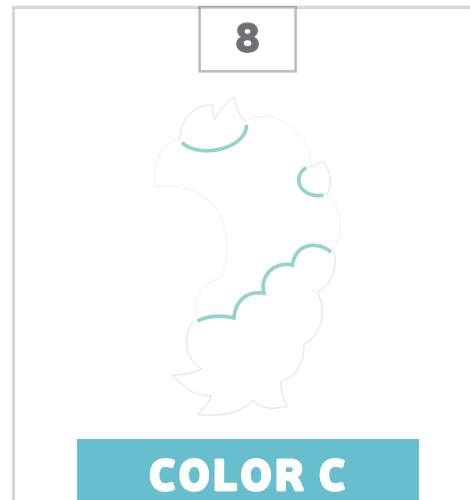
## TRIM THE APPLIQUE FABRIC

- Remove the hoop from the machine. Trim the threads.
- Trim the **ACCENT** fabric as close as you can around the stitching. Use curved embroidery scissors for the best result.
- Run a lint roller over the cut edges if using a fur fabric like minky. This will eliminate any stray fuzz. Tape water-soluble stabilizer over the whole embroidery area. Place the hoop back in the machine.



## REMOVE THE HOOP

- Remove the hoop from your machine. Trim the threads.



## APPLIQUE EDGE

- Use a thread color that matches your applique fabric for the best result.
- This creates satin stitching that will cover the cut edge of your **ACCENT** fabric.



## ALIGNMENT GUIDE

- Any color can be used for this.
- This stitches out a guideline for cutting the pattern piece.

sew desu ne?

| [WWW.CHOLYKNIGHT.COM](http://WWW.CHOLYKNIGHT.COM) |





## CUT THE PATTERN

- When finished embroidering, remove the hoop from the machine and trim the threads. Rip off the water-soluble stabilizer and cut away the backing stabilizer.
- Align the **MANE (PG14A)** OR **TAIL (PG11A)** pattern onto the embroidery, matching up the paper with the alignment stitching.
- Pin the paper pattern in place (or trace the outline). Cut around the pattern. Use the fabric as usual with the rest of the project instructions.

sew desu ne?

| WWW.CHOLYKNIGHT.COM |

// ©2026 Choly Knight // Items sewn using this design may be sold. Credit to "Choly Knight" or "Sew Desu Ne?" is appreciated.  
You may not reproduce, share, freely distribute, or sell this design as your own in digital or printed form.